

PORT OF RÖYTTÄ

PORT HANDBOOK



Port of Röyttä

The history of the Port of Röyttä dates back hundreds of years. The port is located on the coast of the Bay of Bothnia, approximately 13 kilometers from Tornio town center. The fairway leading to the port is nine meters deep and 120 meters wide. The port has total of eight berths.

The port is busy throughout the year, serving approximately 500 vessels per year. Annual volume of cargo is about 3 million tons. Steel and chrome form the main export products while recycled steel, coke, limestones and LNG are the main import products. About five months of the year the Bay of Bothnia is covered by ice. Ice poses challenges, however, icebreakers ensure safe sea passage at all times. The port is mainly used by Outokumpu Tornio Works who manufacture stainless steel and ferrochrome. Port operator is Outokumpu Shipping Oy. Several sub-contractors and cooperative companies operate in the port area as well. The port has a quality management system that meets the requirements of the SFS ISO 9001:2000 standard which aims to continuously monitor and improve quality. Also, an environmental management system in accordance to the international standard ISO 14001.



Distances from Röyttä

Tornio and Haparanda.....	13 km
Kemi-Tornio airport (KEM).....	31 km
Rovaniemi airport (RVN).....	139 km
Luleå airport (LLA).....	147 km
Oulu airport (OUL).....	153 km
Arctic Circle.....	135 km
Helsinki.....	740 km



Location

LAT 65 45,50 N
LONG 24 09,50 E
GISIS CODE 0001
ISPS FITOR



PORT OF RÖYTTÄ



DOCK 2

BERTH	LENGTH	DRAFT
5.	151,5 m	9,0 m
6.	154,1 m	9,0 m
7.	150 m	9,0 m

DOCK 1

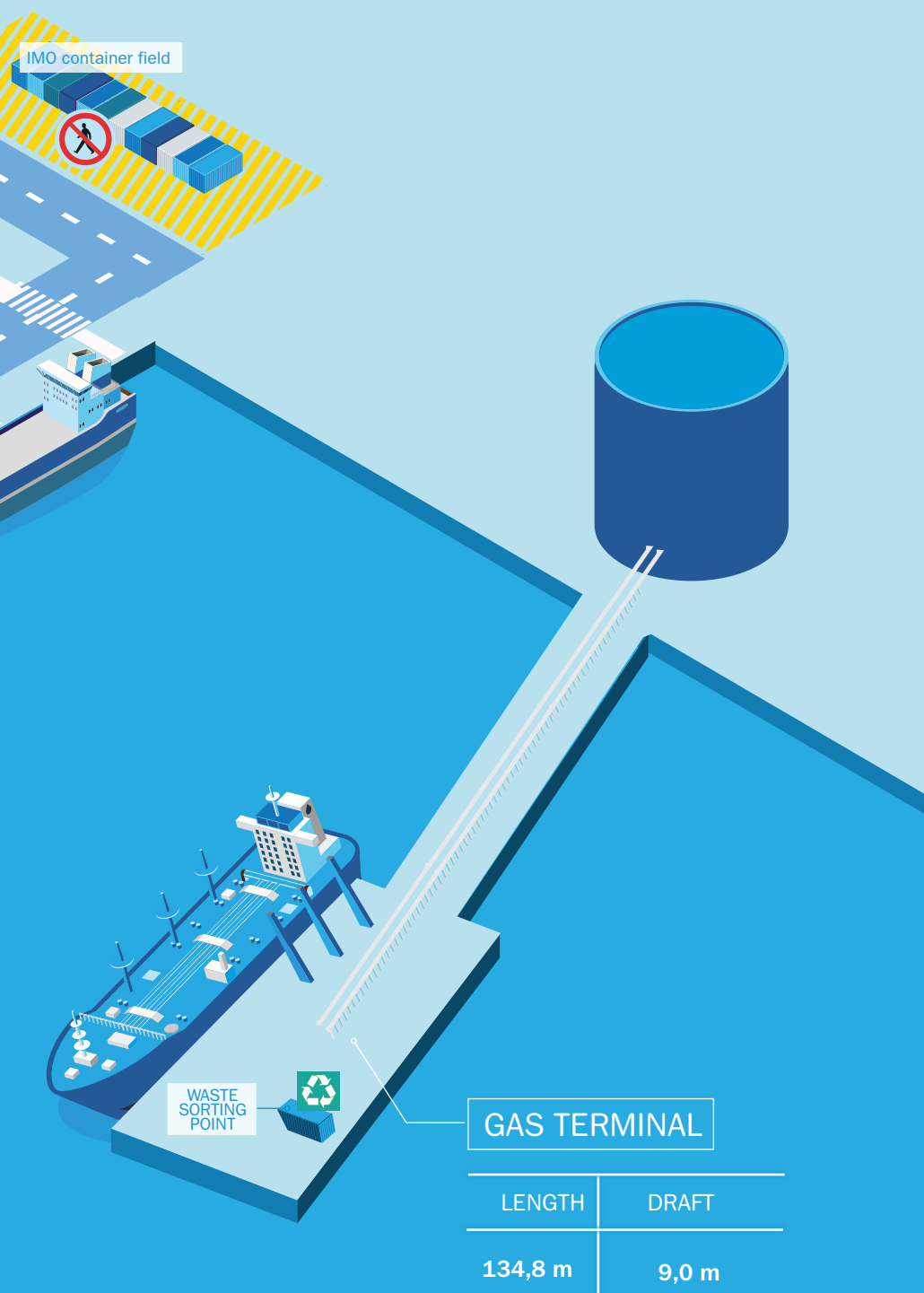
BERTH	LENGTH	DRAFT
1.	144 m	9,0 m
2.	144 m	9,0 m
3.	202 m	9,0 m
4.	208 m	9,0 m

Port area

The port area covers a total of 151 hectares, of which 20 hectares form a field area.

There is possibility for temporary warehousing only.

The port has three docks, one of which is the gas dock. There are eight berths.



Port regulations



Port regulations apply to everyone within the port area.



A hard hat and CE-marked visible clothing is compulsory.



The use, possession and being under the influence of alcohol or narcotics is prohibited.

During vessel's discharging and loading operations it is prohibited to carry out other work that may cause imbalance, disturbing noise, gases or other hindrances.

Pedestrians may walk only on the marked routes.



The port area has speed limit of 30 km/h.



Taking photos and videos, as well as flying a drone, is subject to permission.

Lifting work may only be carried out by specified and inspected cranes. Cranes may be operated only by authorized persons.

Moving about in the port area is subject to permission. Outokumpu Tornio Works factory area is limited to harbor. Visitors or vessels' crewmembers are not allowed to enter Outokumpu factory area without permission.



Waste management

Prohibited

- Pump cargo hold washing water into harbor basin.
- Pump un-clean ballast water into harbor basin.

Regulated

- According to current legislation, a vessel visiting a Finnish port must, before departure, land ashore all vessel originated waste, as well as cargo residues that are prohibited to dump into sea in Baltic Sea according to MARPOL convention and 1992 Helsinki convention.

Services included on the harbor dues

- Removal of sludge and bilges
- Removal of sewage waste
- Out-dated medicines
- Flares, rockets and smokes
- non-EU originated bio waste
- Please contact your agent about disposal

Services with surcharge

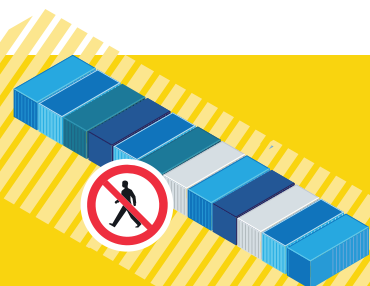
- Suction truck for cargo hold washing water
- High pressure dry vacuum cleaning truck
- Sulphur scrubber residues disposal
- Please contact your agent for quotations and orders



Always wear a hard hat and visible clothing when walking in the port.



Watch out for the cranes and other machinery. Never walk under a crane crab.

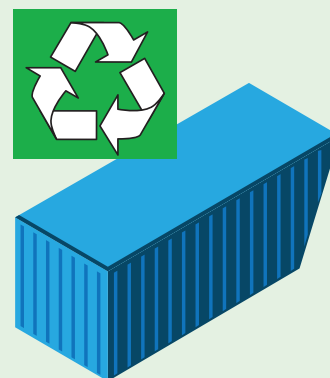


Do not enter container field.

Waste management - Hazardous waste

Hazardous waste can be left into three waste collection points on docks 1 and 2, as well as gas dock. Please see map on pages 4-5. It is strictly prohibited to dump wastes anywhere but into the designated containers.

Waste types must not be mixed. Any costs arising from assorting mixed wastes will be charged on vessel. Trolleys can be borrowed at waste collection points.



There are separate bins for following types of hazardous wastes

- solid and paste-like oily wastes
- lube oils, solvents
- oil filters
- paints, printing inks, varnishes, glues, waxes
- batteries, accumulators
- lamps / bulbs with fluorescent, mercury / quicksilver
- aerosol bottles
- elohopeapurkauslampu ja loisteputket
- electrical waste

Following hazardous wastes should be taken into hazardous waste container in a separate bucket, preferably original container. The content must be clearly written on the bucket.

- oils mixed with water
- non-freezing solutions
- clutch and break fluids
- acid wastes
- alkalic wastes

Waste management

- Recyclable waste

BIOWASTE

YES

- Food
- Coffee filters with grounds
- Paper towels and paper napkins
- Egg packagings
- Plants and flower soil
- Wooden cutlery and tooth picks
- Other biodegradable waste

NO

- Plastic bags and packagings
- Metal packagings
- Foils
- Liquid waste
- Cigarette stubs
- Vacuum cleaner and dust bags
- Ice

PAPER

YES

- Newspapers and magazines
- Leaflets
- Envelopes
- Catalogues, old books without covers
- Printed office copy paper
- Colored papers

NO

- Wet or dirty paper
- Disposable paper plates
- Paper strengthened with foil, plastic or wax
- Gift and wrapping paper
- Cardboard and carton
- Plastic
- Self-copying paper
- Copy paper wraps
- Confidential documents

CARDBOARD

YES

- Cardboard box
- Corrugated cardboard
- Brown carton and craft paper, paper bags
- Milk, juice, cream and other liquid containers
- Liquid containers with plastic nose

NO

- Wet or dirty cardboard
- Polystyrene
- Plastics

ENERGY WASTE

YES

- Plastics (not PVC)
- Polystyrene
- Dirty paper, cardboard and carton
- Wooden packages
- Paper towels
- Textiles and clothes

NO

- Biowaste
- Impregnated wood
- Metal, glass, ceramics
- Stone, sand, soil
- PVC plastic
- Hazardous waste
- Nappies, sanitary towels, adhesive bandages
- Cigarette stubs and ash

GLASS

YES

- Empty glass bottles
- Empty glass jars

NO

- Crystal
- Porcelain
- Ceramics
- Window glass
- Car windshields
- Light bulbs
- Bottle caps and jar lids
- Glass ceramics, ovenware, coffee pots
- Mirror glass

METAL

YES

- Tin and metal waste
- Tins and metal cans
- Metal ware
- Cables
- Empty and brush-dry paint cans
- Metal furniture

NO

- Hazardous waste
- Electronical equipment and waste (WEEE)
- Mixed materials
- Paint-stained barrels and containers
- Insulated ventilation pipes

MIXED WASTE

YES

- Unsorted mixed waste

NO

- Biowaste
- Hazardous waste
- Electronical equipment and waste (WEEE)
- Recyclable waste (paper, cardboard, glass, energy waste)
- Car tyres

Cranes and equipment



Mobile harbor cranes

Mantsinen 300M on wheels	50 tn
Mantsinen 300R on crawlers	50 tn
Mantsinen 120M on crawlers	25 tn
Sennebogen 875 on crawlers	25 tn
Liebherr LHM 200 HD container crane	80 tn

Crane equipment

	120	300	Sennebogen
Grabs for scrap	HG40-5	HG75-6	HTG 10
Clamshell bucket for bulk cargoes	HB 80-2 HB 40-4	HB 160-4 HB 80-4	
Electrohydraulic coil lifter	CC 40	MC 720	
Automatic container Spreader		Bromma 20' MC 720	
Semiautomatic BB Spreader	BB 3-6		

Other machinery

Container Reach Stacker	2 pcs
Forklift	2–12 mt 4 pcs
Bobcat	3 pcs
Volvo L90H wheel loader	1 pcs

Discharging and loading of vessels may only be carried out by harbor equipment.

Working hours in the port in “SSHEX” terms

Mon-Fri: two shifts 7am–4pm & 4pm–12 midnight

Saturday, Sunday and nights: No work (overtime only)

Meal breaks 11am–12 noon, 8pm–8.20pm

